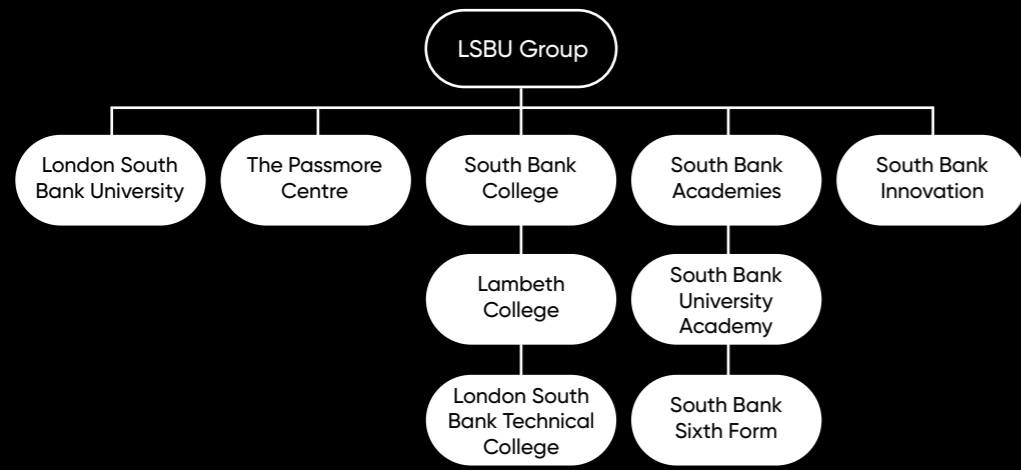


Fit for the future, ready for the real world.

Our goal is to help you succeed, no matter what your age, background, or educational experience. We provide career focussed pathways across all levels, from Entry to Level 8, providing high quality education and sector specific learning to prepare you for your life beyond education and qualifications.

Part of **LSBU | GROUP**



Joining LSBU Group gives our students unrivalled access to educational opportunities, advice and guidance as well as sought-after apprenticeships and work placements. Our students are guaranteed progression to both LSBTC and LSBU*.

Whether your next destination is within LSBU Group or elsewhere, we are one of a handful of providers who offer students the opportunity to progress to one of our new Level 4 one-year courses. Successful completion of this enables our students to fast-track to year 2 of an LSBU degree, saving money as well as providing a standalone, qualification that employers recognise should you decide to leave your studies there.

*after successful completion of a Group qualification that has a progression route

Further information about careers in Health and Social Care can be found here:

www.healthcareers.nhs.uk
www.skillsforcare.org.uk
www.everydayisdifferent.com
www.careerpilot.org.uk
www.nationalcareersservice.direct.gov.uk
www.startprofile.com

Places on Health and Social Care courses, at all levels, are highly sought-after every year. If you believe this is the career pathway for you, but you lack hands-on experience, then we advise you to seek a placement prior to applying.

The following websites are a great place to start:

www.england.nhs.uk/participation/get-involved/volunteering
www.guysandstthomas.nhs.uk/careers/other-types-of-work/volunteering/volunteering.aspx
www.kch.nhs.uk/about/get-involved/volunteering
www.london.gov.uk/what-we-do/volunteering
www.southlondoncares.org.uk/get-involved
www.handsonlondon.org.uk
www.healthwatchlambeth.org.uk/volunteer

LSBU | GROUP

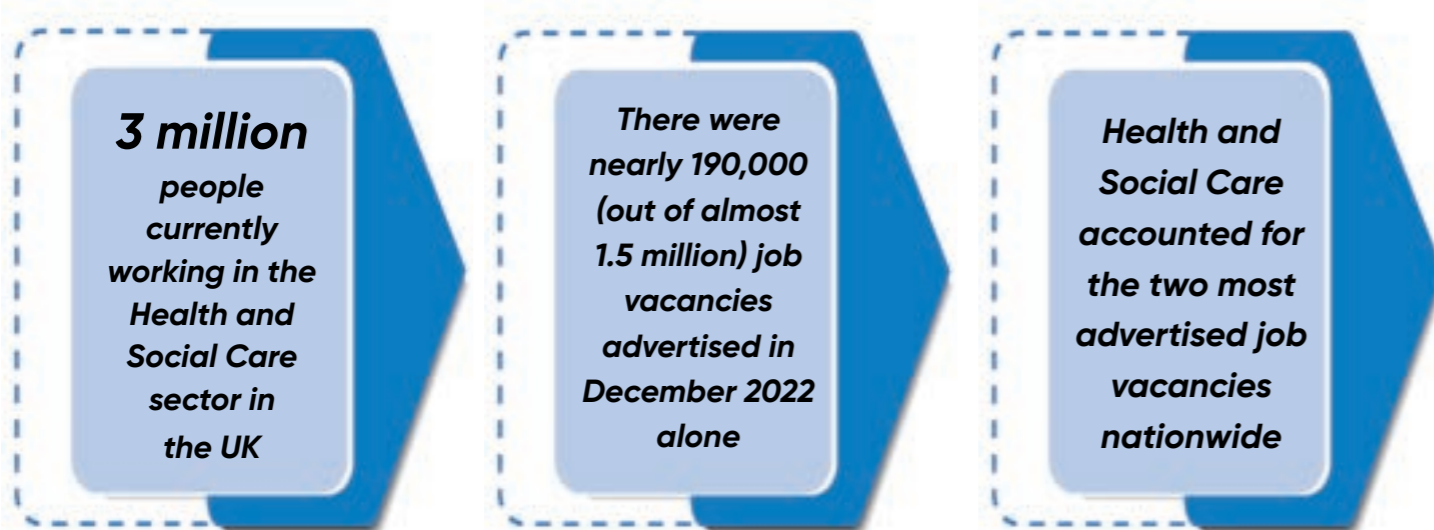


HEALTH AND SOCIAL CARE



The Need for Health and Social Care Roles

A career in Health and Social Care is much more than just a job; it is a hugely-rewarding vocation and, for many, a true calling. It takes a very special person to succeed in this sector, but for those of you who possess the right personal qualities, dedication, and attitude, a lifetime of rewarding and fulfilling employment awaits you.



An Introduction to Health and Social Care

The Health and Social Care industry is made up of a huge variety of organisations and agencies; all of whose primary focus is on maintaining and improving the nation's physical and mental health, quality of life, and wellbeing. This includes hospitals, clinics, dentists, nursing homes, care homes, nurseries, and community outreach programmes. Put simply, it includes any organisation or service which helps people live more independent and healthier lives, and is split into Healthcare and Social Care.

Healthcare is responsible for the treatment of ill-health and medical conditions in hospitals, health centres, clinics and in the community; the vast majority of which is provided by the NHS; while **Social Care** provides non-clinical help through numerous agencies, organisations and activities - from child protection and youth work, right through to residential and palliative (end of life) care.

Due to their medical and scientific nature, many jobs in the Healthcare sector require specific and specialised qualifications at degree level, such as Nurse, Midwife, Doctor, Pharmacist and Physiotherapist; but there are numerous rewarding positions that can be achieved without Higher education study. Nearly half (48%) of all NHS roles require professional qualifications of some level.

The Social Care sector has a wide range of fulfilling roles that can be started without Higher or Further education level qualifications, but will require industry-specific training such as NVQ Level 2 or Level 3 in Care; 67% of all Social Care staff are educated to a minimum of NVQ Level 2 or above.

The LSBU Group is one of the largest providers of clinical education for allied health and related professions in the UK. Our Health Care qualifications reflect change currently happening in the workplace, ensuring students stay industry relevant. We support our students throughout their studying to develop their chosen career path by working closely with 60+ NHS partner organisations healthcare professionals to ensure they gain the appropriate skills and have access to placements in hospitals, clinics and the community to support them in becoming qualified healthcare professionals.



In May 2023 at the Student Nursing Times Awards 2023, LSBU's Amba Morrell won the Student Midwife of the Year award.



Is Health and Social Care the Right Pathway for You?

Gaining the necessary qualifications, and undertaking voluntary placements, can teach you the knowledge and expertise you will need in this sector, but there are a number of personal qualities and transferrable skills that are essential for a successful and rewarding career in the Health and Social Care industry.

You'll need excellent communication and listening skills; have the ability to build good working relationships with families, groups and professionals alike; possess good report writing, analytical and IT skills; be a great listener and communicator; be confident in making decisions and applying your professional judgement; have sound organisational and administration skills; be able to remain calm under pressure; and possess a high degree of compassion, tact, and understanding.

Careers in Health and Social Care

With **over 350 recognised job roles in Health and Social Care**, if you possess the requisite ambition and personal qualities, you're sure to find a rewarding, fulfilling, and ideally-suited career for you. Many jobs in Health and Social Care are designed so that people can either stay in their current role, or undertake additional training and further qualifications, in order to advance along their chosen career path.

There is a huge array of both clinical and non-clinical **Health** careers available to you. You could be a frontline hero working on a ward or in an operating theatre, or even a laboratory or office superstar - working behind the scenes to keep Healthcare services running smoothly. Health careers include roles such as Nurses, Midwives, Physiotherapists and Biomedical Scientists.

In a **Social Care** career, you'll be supporting people with their non-clinical needs and enabling them to lead happier, healthier, and more independent lives. You could find yourself helping people in their own homes, residential or care homes, day centres, supported housing, or in the community. Social Care careers include Social Workers, Care Managers, and Community Support Workers.

Health and Social Care Working Together: As the two parts of this wide industry are so intrinsically linked - and the values and qualities so similar - there are many roles that cover both aspects, and you can choose a career that encompasses both Health and Social Care, such as Occupational Therapist, Healthcare Support Worker, or Health Promotion Specialist.

It is estimated that the NHS will require an additional 314,000 full-time staff by 2031 to meet the country's need.

The salary for a **Care Manager** averages from around **£25k to £55k p.a.**, while some senior managers can earn up to **£70k**; **Biomedical Scientist** salaries range from **£26k to £46k**, rising to closer to **£60k** for consultant biomedical scientists who have reached the top of their field; a **Dental Nurse** can expect a starting salary of around **£22k** rising to **£33k** with experience; once qualified, a **Health Promotion Specialist** average wage is between **£26k to £31k**, rising to **£32k to £39k** with suitable experience. Those working at a very senior level can earn from **£40k to £46k**; newly-qualified **Midwives and Nurses** start at around **£26k**, but once experienced the pay ranges from **£32k to £39k**. Those working in senior positions can earn **£40k to £46k**, while nurse consultants can earn up to **£75k**.

There are plenty of opportunities open to you. Here are just a few ideas:

- Ambulance Driver
- Anaesthesia Technician
- Biomedical Scientist
- Care Manager
- Charity Officer
- Community Development Officer
- Community Support Worker
- Counsellor
- Dental Hygienist
- Dental Technician
- Dentist
- Dietician
- Doctor
- Health Promotion Specialist
- Healthcare Support Worker
- Mental Health Practitioner
- Midwife
- Nurse
- Occupational Therapist
- Paediatrician
- Paramedic
- Pharmacist
- Physiotherapist
- Public Health Manager
- Psychologist
- Social Worker
- Social Work Assistant
- Youth Worker

“NHS and medical industry partnerships are at the forefront of teaching and learning at LSBTC. Together we are developing sector leading programmes to ensure that all students are highly-skilled in Health and Social care professions.”
Helen Drewery, LSBTC Director (STEAM Pathways)

HEALTH AND SOCIAL CARE

LSBU London South Bank University

LSBTC London South Bank Technical College

LC Lambeth College

SBUSIXTH South Bank University Sixth Form

SBUA South Bank University Academy

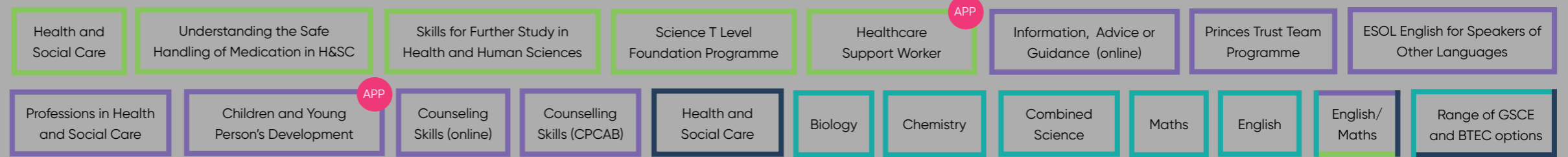
ENTRY LEVEL
Award, Certificate (ELC), Diploma
English for speakers of other languages (ESOL)
Essential skills
Functional skills
Skills for Life



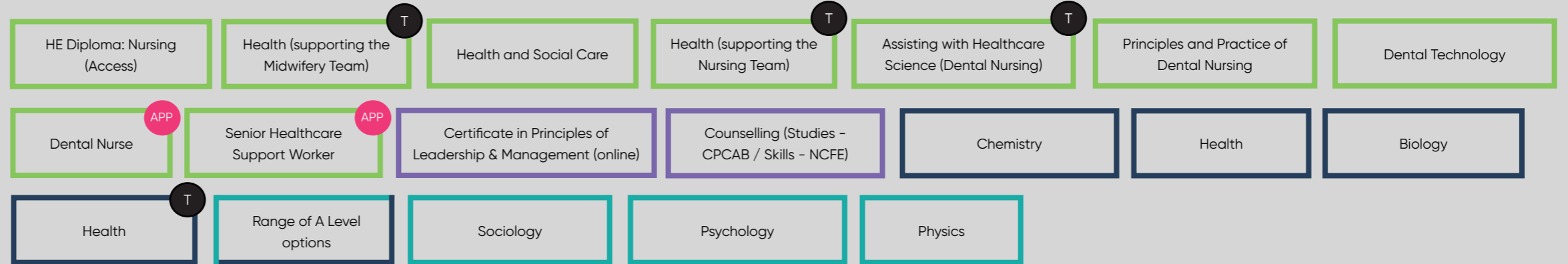
LEVEL 1
First Certificate, Award, Certificate, Diploma, ESOL
Essential skills
Functional skills
National vocational qualification (NVQ)



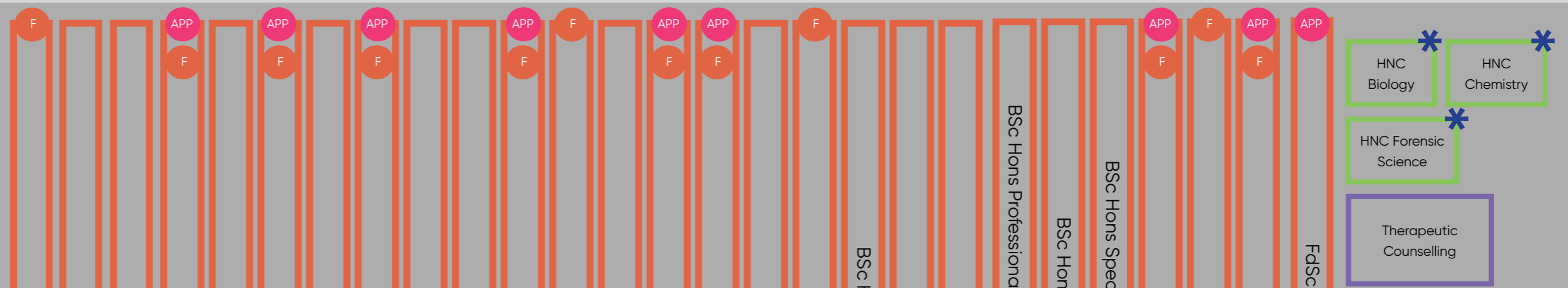
LEVEL 2
Intermediate Apprenticeship, Award, Certificate, Diploma, ESOL
Essential skills
Functional skills
NVQ
GCSE
Technical Certificate



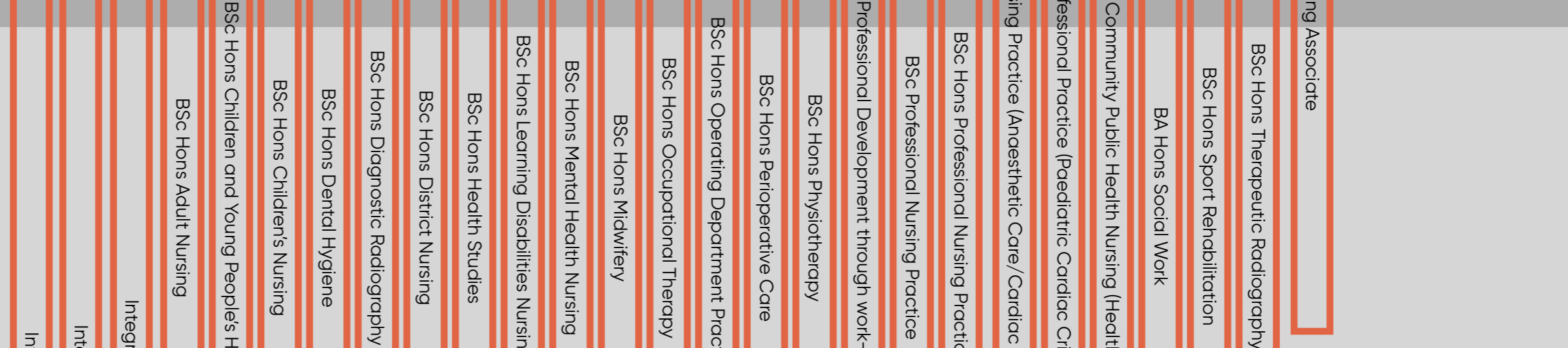
LEVEL 3
Access to HE Diploma
Advanced Apprenticeship
A Level
Applied General Award, Certificate, Diploma, ESOL
NVQ
T Level
Technical Diploma



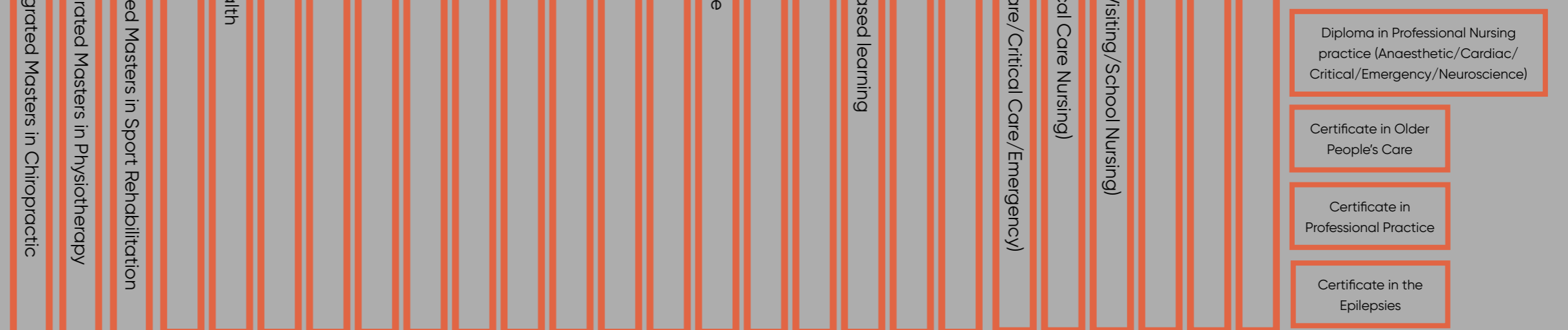
LEVEL 4
CertHE
Higher Apprenticeship
HNC
Award, Certificate, Diploma
NVQ



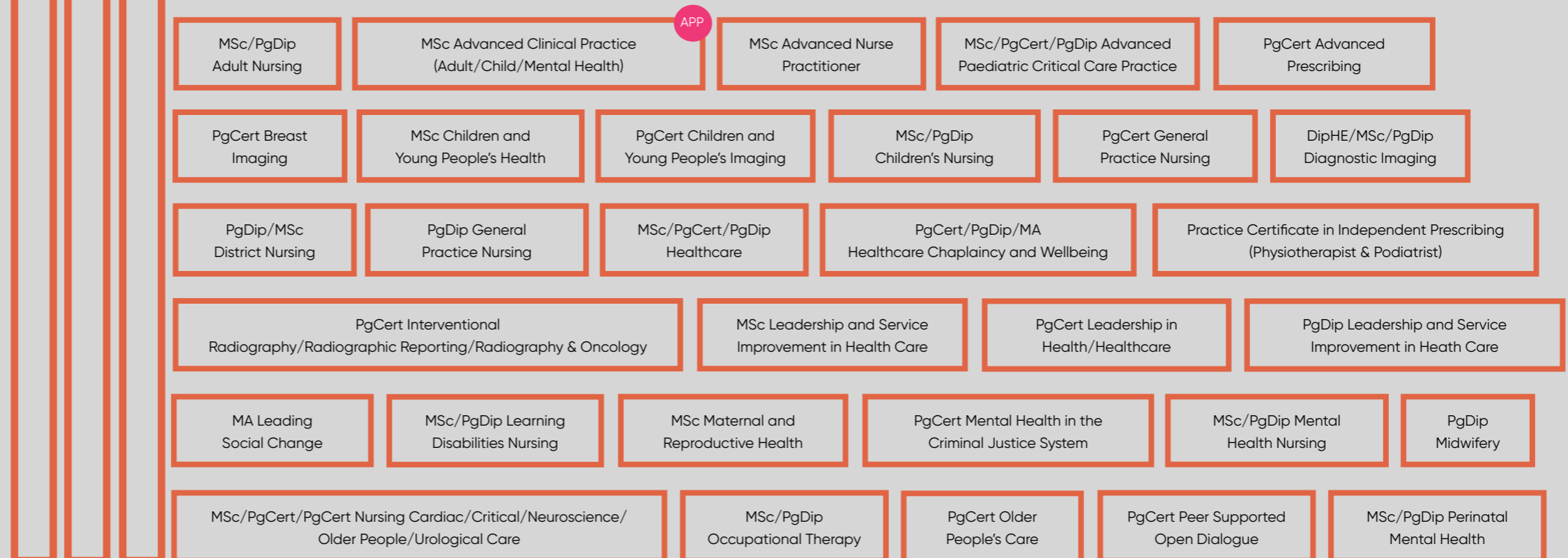
LEVEL 5
DipHE
Foundation Degree
HND
Award, Certificate, Diploma
NVQ



LEVEL 6
Degree Apprenticeship
Degree (with or without Honours)
Graduate Certificate/Diploma
Award, Certificate, Diploma
NVQ



LEVEL 7
Integrated Master's Degree
Award, Certificate, Diploma, NVQ, Master's Degree
Postgraduate Certificate / Diploma
Postgraduate Certificate in Education (PGCE)



LEVEL 8
Doctorate (PhD or DPhil)
Award, Certificate, Diploma



T T Level, includes 45-day industry placement

***** Direct yr2 entry on to LSBU degree programme on successful completion

APP Apprenticeship

F Foundation year available